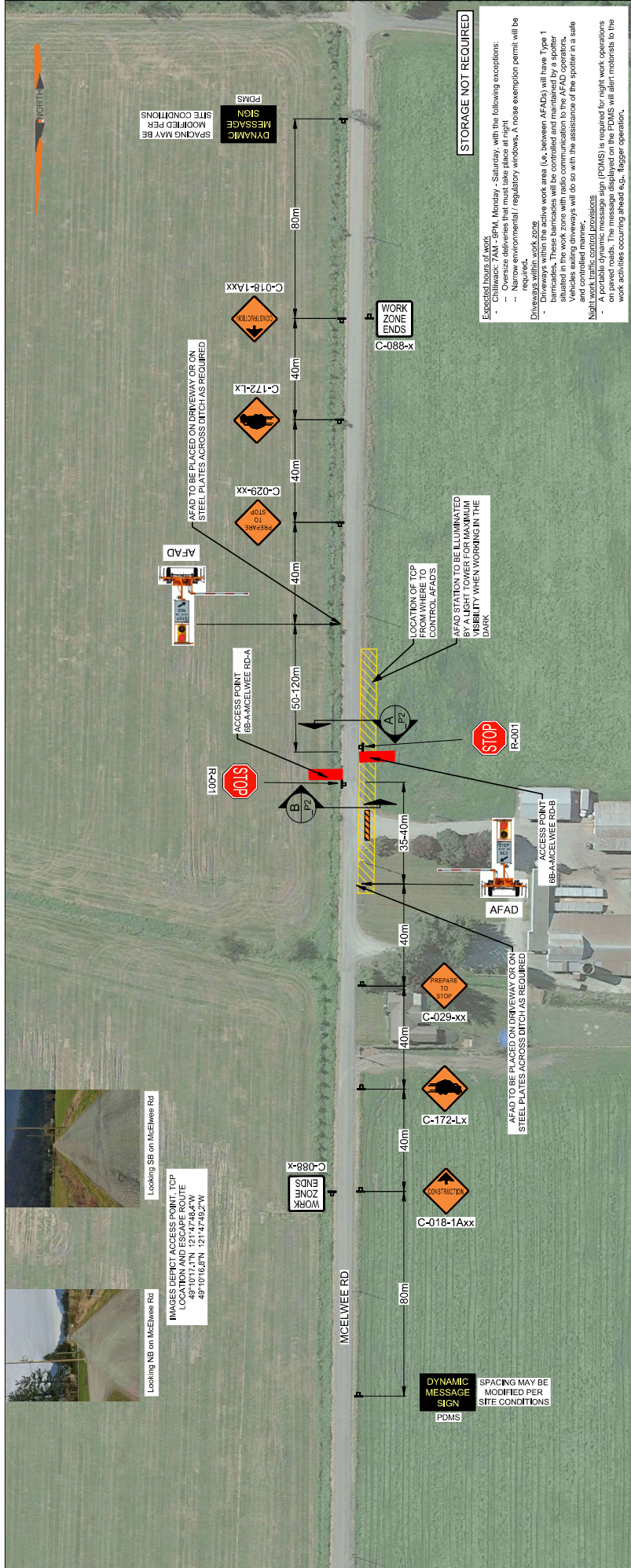
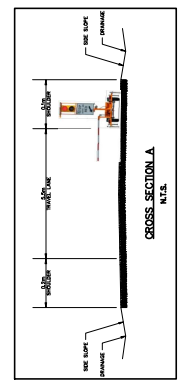


Looking NB on McElwee Rd
Looking SB on McElwee Rd
IMAGES DEPICT ACCESS POINT TCP
COORDINATES: 49°10'17.17N 121°47'46.43"W
49°10'16.87N 121°47'49.27"W

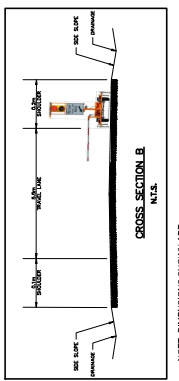


STORAGE NOT REQUIRED

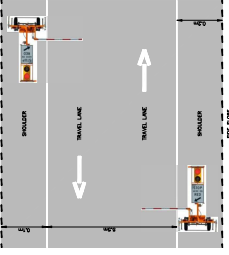
Essential items for work:
 - Closed Zone Sign
 - Oversize deliveries that must take place at night
 - Narrow environmental / regulatory windows. A noise exemption permit will be required.
 - Discharge work zone
 - Driveways within the active work area (i.e. between AFADs) will have Type 1 barricades. These barricades will be controlled and maintained by a spotter situated in the work zone with radio communication to the AFAD operators. The operators will do so with the assistance of the spotter in a safe and controlled manner.
 - Night work traffic control provisions
 - A portable dynamic message sign (PDMs) is required for night work operations on parkways. The message displayed on the PDMs will alert motorists to the work starting occurring ahead e.g. 'lagger operation'.



NOTE DIMENSIONS SHOWN ARE SITE SPECIFIC



NOTE DIMENSIONS SHOWN ARE SITE SPECIFIC



NOTE DIMENSIONS SHOWN ARE SITE SPECIFIC

LEGEND:

- 1 SIGN MARKER
- AUTOMATED FLAGGER
- ASSISTANCE DEVICE (AFAD)
- TCP CONTROL LOCATION
- TYPE 1 BARRICADE
- ACCESS (AP-6B-A-MCELWEE RD-A&B)

SEAL:

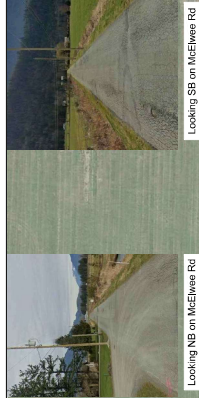
PERMIT TO PRACTICE
 WATT CONSULTING GROUP LTD
 SIGNATURE _____
 DATE _____
 PERMIT NUMBER: 1001432
 ENGINEERS & GEOSCIENTISTS
 BRITISH COLUMBIA

ISSUED FOR IMPLEMENTATION	REVISIONS
0	FEB 03-23
1	
2	
3	
4	
5	
6	
7	
8	

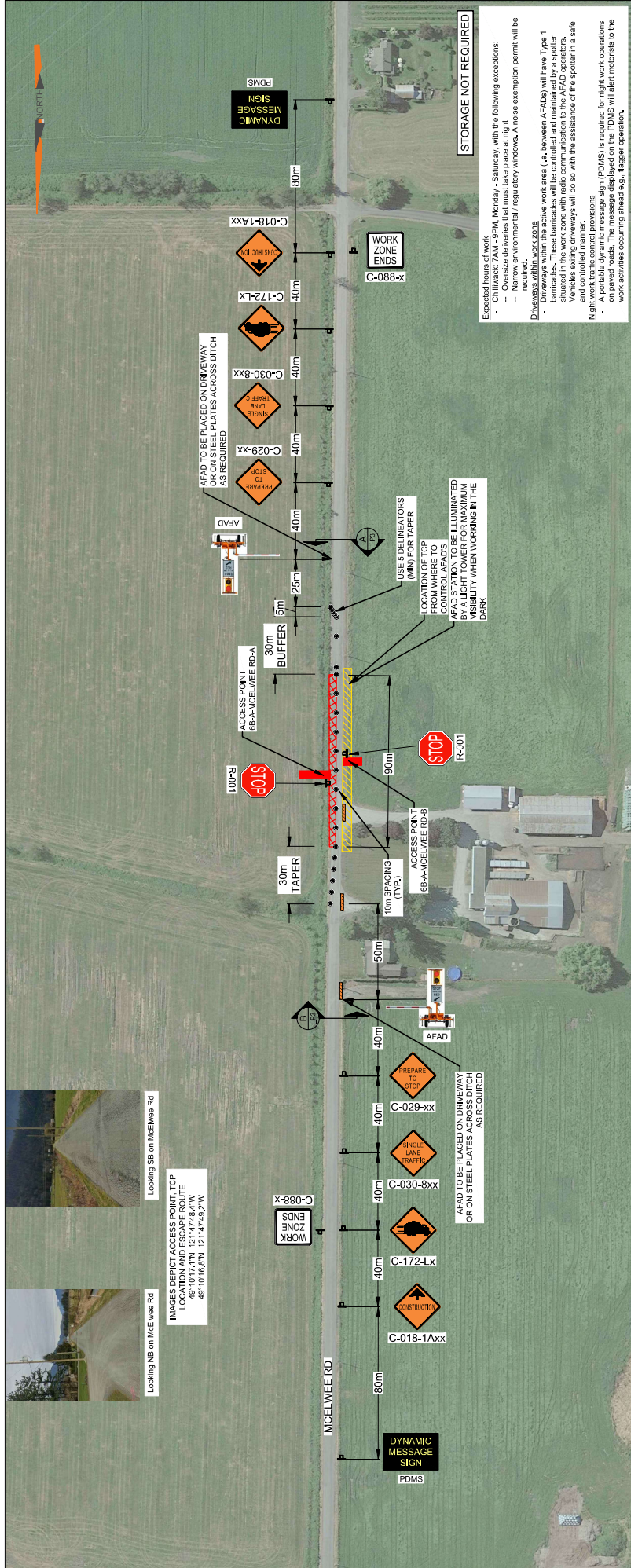
DESIGNED:	DRAWN:	CHECKED:	APPROVED:
KB	KB	KB	KM
DESIGN SPEED:	DESIGN VEHICLE:	PROJECT NO.:	DRAWING NO.:
50km/h		3431.801	6B-A-MCELWEE-A&B_P2
DATE:	REVISION:		
FEB 03, 2023	0		

Traffic Control Layout
AP 6B-A-MCELWEE RD-A&B
BPLP TMEP SPREAD 6B

WATT Consulting Group
 Calgary, Edmonton, Lloydminster,
 Okanagan, Vancouver, Victoria
 WATTCONSULTINGGROUP.COM

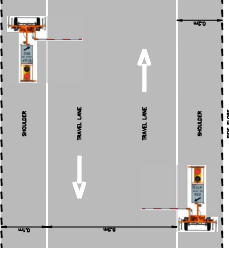


IMAGES DERIVED ACCESS POINT, TCP
 COORDINATES: 49°10'17.17N 121°47'48.43"W
 49°10'16.87N 121°47'49.27"W

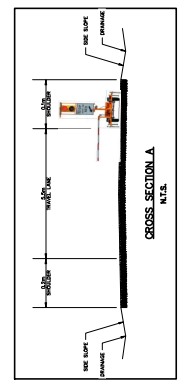


STORAGE NOT REQUIRED

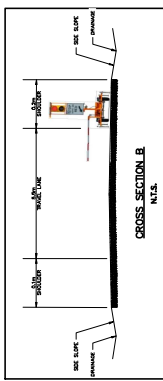
Essential hours of work:
 - Closed 7 AM - 5 PM, Monday - Saturday, with the following exceptions:
 - Oversize deliveries that must take place at night
 - Narrow environmental / regulatory windows. A noise exemption permit will be required.
 - Driveways within the active work area (i.e. between AFADs) will have Type 1 barricades. These barricades will be controlled and maintained by a spotter situated in the work zone with radio communication to the AFAD operators. Work on driveways will do so with the assistance of the spotter in a safe and controlled manner.
 - Night work traffic control provisions
 - A portable dynamic message sign (PDMS) is required for night work operations on paved roads. The message displayed on the PDMS will alert motorists to the work activities occurring ahead e.g. 'Major operation'.



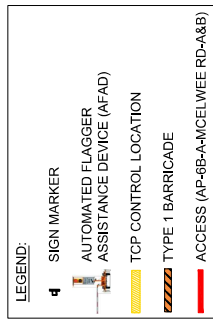
NOTE: DIMENSIONS SHOWN ARE SITE SPECIFIC



NOTE: DIMENSIONS SHOWN ARE SITE SPECIFIC



NOTE: DIMENSIONS SHOWN ARE SITE SPECIFIC



SEAL:

PERMIT TO PRACTICE
 WATT CONSULTING GROUP LTD
 SIGNATURE _____
 DATE _____
PERMIT NUMBER: 1001432
 ENGINEERS & GEOSCIENTISTS
 BRITISH COLUMBIA

ISSUED FOR IMPLEMENTATION	REVISIONS
0	FEB 03-23
1	
2	
3	
4	
5	
6	
7	
8	

TITLE: TRAFFIC CONTROL LAYOUT
 AP 6B-A-MCELWEE RD-A&B-SLAT
 BPLP TMEP SPREAD 6B

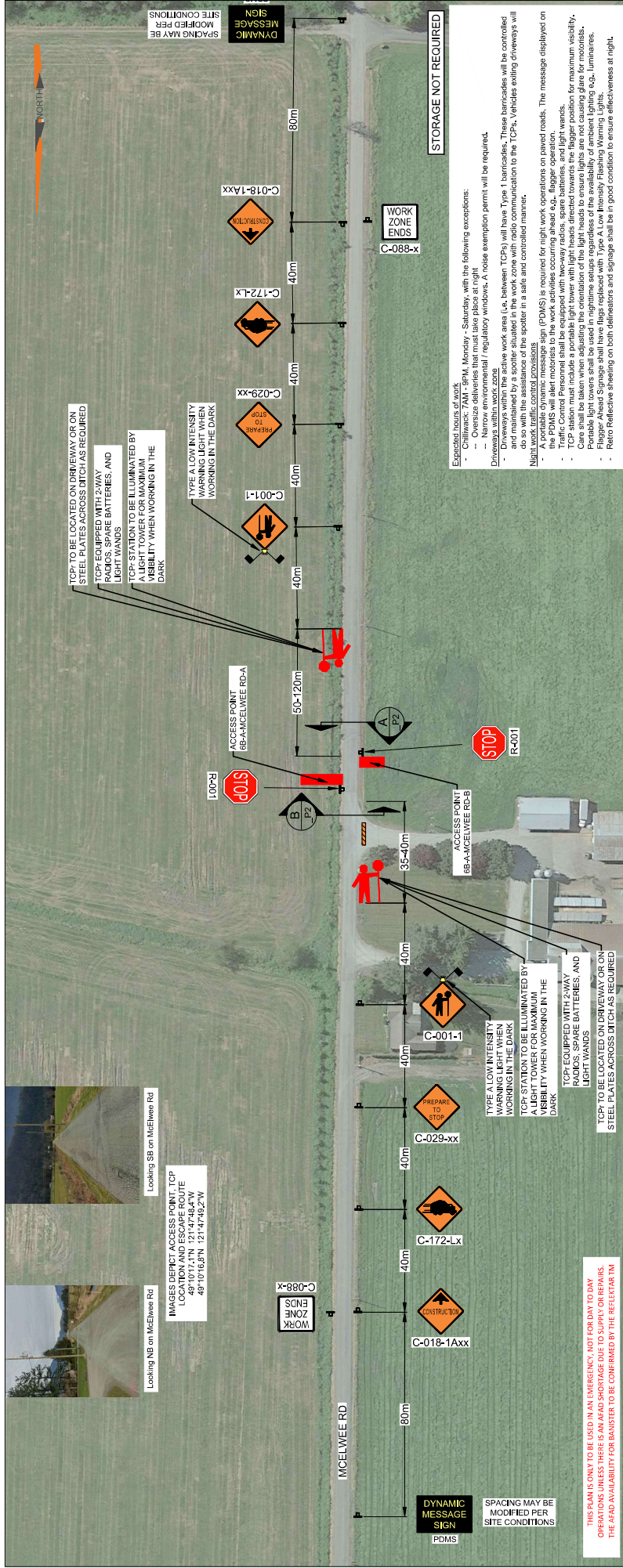
DESIGNED: DRAWN: CHECKED: APPROV: KM KM KM KM
 12.000

DESIGN SPEED: 50km/h
 DESIGN VEHICLE:

PROJECT NO: 3431.801
 DRAWING NO: 6B-A-MCELWEE-SLAT_P3

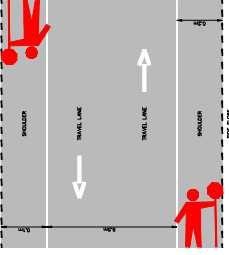
DATE: FEB 03, 2023
 REVISION: 0

WATT Consulting Group
 Calgary, Edmonton, Lloydminster,
 Okanagan, Vancouver, Victoria
 WATTCONSULTINGGROUP.COM

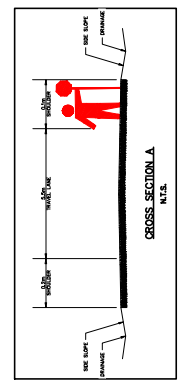


IMAGES DERIVED ACCESS POINT TCFP
 LOCATION: 48°10'07.17N 121°47'48.42W E
 48°10'16.82N 121°47'49.22W

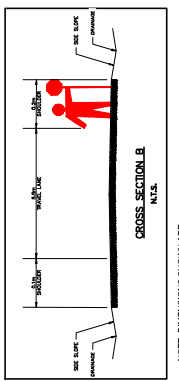
- STORAGE NOT REQUIRED**
- Challenged: 7AM - 9PM, Monday - Saturday, with the following exceptions:
 - Narrow environmental / regulatory windows. A noise exemption permit will be required.
 - Drives within the active work area (i.e. between TCFs) will have Type 1 barricades. These barricades will be controlled and maintained by a spotter situated in the work zone with radio communication to the TCFs. Vehicles exiting driveways will do so with the assistance of the spotter in a safe and controlled manner.
 - A portable dynamic message sign (PDMS) is required for night work operations on paved roads. The message displayed on the PDMS will alert motorists to the work activities occurring ahead e.g., flagger operation.
 - Traffic Control Personnel shall be equipped with two-way radios, spare batteries, and light wands.
 - Portable light towers shall be used in nighttime setups regardless of the availability of ambient lighting e.g., luminaires.
 - Flagger Ahead Signage shall have flags replaced with Type A Low Intensity Flashing Warning Lights.
 - Retro Reflective sheeting on both delineators and signage shall be in good condition to ensure effectiveness at night.



NOTE: DIMENSIONS SHOWN ARE SITE SPECIFIC



NOTE: DIMENSIONS SHOWN ARE SITE SPECIFIC



NOTE: DIMENSIONS SHOWN ARE SITE SPECIFIC

REVISIONS

ISSUED FOR IMPLEMENTATION	DATE
0	FEB 03, 2023

DESIGNED: DRAWN: KB
CHECKED: AP/RYD: T.T. SBO
DESIGN SPEED: 50km/h
DESIGN VEHICLE: 3431.B01

PROJECT NO.: 3431.B01
DRAWING NO.: 8B-A-McELWEE-AP-TCF-P2
DATE: FEB 03, 2023
REVISION: 0

TITLE:
 TRAFFIC CONTROL LAYOUT
 AP 6B-A-McELWEE RD-A&B-TCFp
 BPLP TMEP SPREAD 6B

PERMIT TO PRACTICE
 WATT CONSULTING GROUP LTD
 SIGNATURE
 DATE
 PERMIT NUMBER: 1001432
 ENGINEERS & GEOSCIENTISTS
 BRITISH COLUMBIA

LEGEND:

- 4 SIGN MARKER
- TOP CONTROL LOCATION
- TYPE 1 BARRICADE
- ACCESS (6B-A-McELWEE RD-A&B)

Calgary, Edmonton, Lloydminster,
 Okanagan, Vancouver, Victoria
WATT Consulting Group
 WATTCONSULTINGGROUP.COM